

# Elecforce Australia

[elecforce.com.au](http://elecforce.com.au)

03 8202 5114



## Solar Capability Statement



17/21 Barry St,  
Bayswater, VIC, 3153



# Products and Services

**Established in 2016, Elecforce has grown quickly to become one of Victoria's premier electrical contractors offering a various array of electrical works to Commercial, Industrial and Residential customers including;**

- PV Solar System Designs & Installations,
- Power Factor Correction installation,
- LED lighting upgrades,
- Office Power and Data Fit Outs,
- Factory Power and Data Fit Outs,
- General Light & Power installations,
- Retail Stores reticulation
- Car Park Lighting installations,
- Temporary Light & Power installations,
- Installations of Main Switchboards & DB's,
- Medical & Body Protected Areas
- Underground cabling infrastructure
- Substation works and dealing with supply authorities
- Excavation works
- Street Lighting and Sports Pavilion lighting
- General Light and Power installations
- Coordinating large main and sub-main cable pulls
- Main Switchboard and DB installations





# Installation Certifications and Licenses

**Eleforce provides peace of mind when it comes to the installation of solar systems. Our team is certified with the following qualifications;**

- A-Grade Electrician on site at every installation
- CEC accreditation
- Master Electrician Member
- \$20 million public liability insurance
- Elevated Work Platform licensing
- Working at height certification
- White Card
- First Aid certification
- Working With Children Check
- Solar Battery installation available



# Company Resources

## Solar Designers

A team of designers liaise with project managers and installers to produce accurate layouts. Their responsibilities include researching various designs to ensure all configurations meet CEC standards. They utilise computer software to calculate the appropriate number of panels per install to maximise return for the customer with special consideration given to the industry and application of the job.



## Auditors

Elecfence can perform an audit of your current solar system to determine efficiency and safety is at its highest. In the instance where a system does not meet standards, Elecfence can offer to rectify these issues to ensure compliance.



## Project Managers

The Elecfence team of project managers take care of the entire installation. Their process begins with an analysis of roof structures and electrical switchboards within your premises including a review of any relevant architectural plans. Project managers will then liaise with designers and electricians to determine how to achieve the best outcome for your business. The goal of the project manager is to exceed the expectations of the customer and deliver a seamless experience.





# Quality Assurance

Elecforce Australia is committed to comply with the requirements of ISO 9001:2015. We pursue best practice Quality Assurance Principles and meet all statutory requirements.

We aim to deliver a professional, reliable and affordable quality solar & electrical installations. We are committed to meeting customer expectations through implementation of our job process system, which includes comprehensive communication, reporting and follow-up procedures.

Our high-quality service means we can meet customer expectations by mitigating issues before they become a problem, respond quickly and efficiently to each job, understand customer requirements, conduct post job clean up, provide reasonable quotes and give helpful and useful information and advice.



Elecforce Australia ensures that the quality policy is communicated to all employees via staff training procedures. Our highly skilled staff understand the importance of meeting customer requirements and maintaining strong business relationships and providing excellent customer service.

Elecforce Australia conducts management review of the quality management system through management review meetings to ensure its ongoing effectiveness and to identify areas for continual improvement.

The quality management system is reviewed at each management review meeting to determine its continuing suitability for our organization. This policy is established, understood, implemented and maintained at all levels of Elecforce Australia Electrical Services.

The safety of our team and customers is paramount. Elecforce has a zero tolerance of unsafe practices, and ensures all Elecforce sites are at a standard that safeguards our team, our customers and the community.

All sites we attend are assessed for hazards & impacts relevant to all work activities. A risk management plan is created and distributed to the on-site team for review. The on-site SWMS and risk management plan is then implemented for all Elecforce Australia team members to adhere to.



**Edge Protection**



**Mobile Walkway**

**All of our installations comply with and exceed:**

- AS/NZS 3000 Electrical Wiring Rules
- AS/NZS 5033 Installation of photo-voltaic (PV) arrays
- AS 1768 Lightning Protection
- AS/NZS 1170.2 Wind Loads
- AS 4777 Grid Connections of Energy Systems via inverters

# Completed Works

## > 30kW

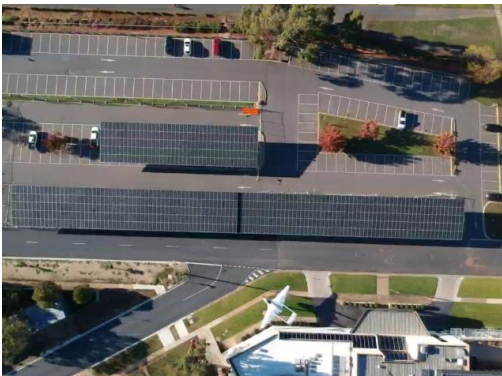
### 30kW to 60kW

30kW\_Universal Time Recorders\_ Truganina  
 30kW\_Farbraduct Sheetmetal\_ Dandenong South  
 30kW\_Karingal HQ\_ Belmont  
 32kW\_Melb Business School\_ Carlton  
 30kW\_Chefs Perfection\_ Dandenong  
 30kW\_Hare & Forbes Machinery\_ Dandenong South  
 30kW\_Star Ceilings\_ Keysborough  
 40kW\_Swan Plumbing\_ Narre Warren  
 30kW\_Active Electrical\_ Port Melbourne  
 59kW\_Hansa Butchery\_ Mordialloc  
 50kW\_Rosebud Hotel\_ Rosebud  
 60kW\_GMT Trading\_ Cora Lynn  
 30kW\_Almara Cabinets\_ Dandenong South  
 30kW\_Welling & Crossley\_ Brooklyn  
 45kW\_KWR Poultry\_ Koo Wee Rup  
 60kW\_Reeve Bulk Food Tsp\_ Shepparton  
 40kW\_Med Con\_ Shepparton  
 30kW\_Reference AV\_ Ringwood  
 40kW\_Green Leaves\_ Craigieburn  
 40kW\_El Kanah Resort\_ Marysville



### 61kW to 100kW

99kW\_AIRA\_ Kilsyth,  
 99kW\_PACCAR\_ Kenworth Bayswater  
 99kW\_Storage King\_ Kilsyth  
 99kW\_Mayflower Aged Care\_ Brighton East  
 80kW\_Altona Bowls Club\_ Altona  
 50kW\_Athol Rd P.S. Springvale  
 99kW\_Miglas\_ Montrose  
 99kW\_Yarraville Club\_ Yarraville  
 99kW\_Track Trailer\_ Bayswater  
 99kW\_TDJ Australia\_ Braeside  
 99kW\_Xavier College\_ Kew  
 99kW\_La Madre Bakery\_ Geelong  
 99kW\_Synnex\_Oakleigh  
 99kW\_Ground Mount\_ De Bortoli\_ Dixons Creek  
 99kW\_Central Park Orchards\_ Shepparton  
 99kW\_Project Cassini\_ Truganina  
 99kW\_Downer\_ Derrimut  
 99kW\_Bidfood\_ Truganina  
 99kW\_Bed Bath N Table\_ Truganina  
 99kW\_Kuehne and Nagel\_ Derrimut  
 70kW\_Mt Derrimut Golf Club\_ Derrimut  
 75kW\_Croatian Club\_ Footscray  
 75kW\_Croatian Club\_ Geelong  
 80kW\_Blue Connections\_ Scoresby  
 99kW\_Mortlock Farm\_ Yanakie  
 99kW\_Bidfood\_ Bendigo  
 82kW\_Carpark Structure\_ Brimbank Council\_ Sunshine  
 99kW\_Tempo Foods\_ Mordialloc  
 99kW\_Old Colonist Assoc of Vic\_ St Helena





# Completed Works > 30kW (Cont)

## 61kW to 100kW – Cont

99kW\_Spec 3\_ Braeside  
 99kW\_IGA Whittlesea\_ Whittlesea  
 99kW\_IGA Heathcote\_ Heathcote  
 99kW\_Mountain Valley Produce\_ Shepparton East  
 82kW\_Rangedale\_ Altona North  
 68kW\_Vicpole\_ Bayswater  
 97kW\_Prebuilt\_ Kilsyth  
 70kW\_Aurora Foods\_ Coburg  
 70kW\_Austab Labels\_ Altona North  
 99kW\_Papparich\_ Port Melbourne  
 99kW\_Punt Rd Winery\_ Coldstream  
 99kW\_Cleanaway\_ Dandenong Sth  
 99kW\_Adapt-a-lift\_ Truganina  
 99kW\_Cop-a-mate\_ Campbellfield  
 99kW\_AMA Precast\_ Derrimut  
 99kW\_Fankhauser Apples\_ Drouin  
 99kW\_Elizabeth Bright Cold Storage\_ Brooklyn  
 63kW\_Lai Switchboards\_ Epping  
 99kW\_Qanstruct\_ Laverton North  
 99kW\_GovHub\_ Morwell  
 99kW\_Godfrey Hirst\_ Truganina  
 99kW\_DHL\_ Altona  
 99kW\_Wire Industries\_ Truganina  
 99kW\_Encore Tissues\_ Truganina



## >100kW

305kW\_Shamic Sheetmetal\_ Croydon South  
 239kW\_Delta Pack\_ Kilsyth  
 300kW\_Radio Frequency Systems\_ Kilsyth  
 450kW\_Austco Polar Storage\_ Laverton North  
 450kW\_Davies Bakery\_ Broadmeadows  
 500kW\_Ground Mount\_ True Foods\_ Maryborough  
 1015kW\_Burwood Brickworks\_ Burwood  
 210kW\_Bidfood\_ Dandenong  
 306kW\_Carpark Structure\_ Corowa RSL\_ Corowa  
 270kW\_JC Tanloden\_ Bendigo  
 2100kW\_Latrobe University\_ Bundoora  
 200kW\_Biodiversity\_ Epping  
 353kW\_Mariner\_ Truganina  
 242kW\_Almax Aluminium\_ Abbotsford  
 200kW\_Gippsland Water\_ Moe  
 200kW\_Gippsland Water\_ Traralgon  
 240kW\_Smardt Chillers\_ Bayswater  
 1498kW\_Melbourne Fresh DC\_ Truganina  
 552kW\_Time Out Caravan Park\_ Koonoomoo  
 200kW\_Keilor Central Shopping Centre\_ Keilor Downs  
 669kW\_Harvey Norman Homemaker Centre\_ Springvale  
 300kW\_Uniqlo\_ Truganina  
 552kW\_Hygain Feeds\_ Officer  
 200kW\_GPT\_ Truganina  
 600kW\_Hello Fresh\_ Ravenhall  
 1689kW\_Flavour Makers\_ Braeside