

# Elecforce Australia

[elecforce.com.au](http://elecforce.com.au)

03 8202 5114



## Solar Capability Statement



17/21 Barry St,  
Bayswater, VIC, 3153



# Products and Services

**Established in 2016, Elecforce has grown quickly to become one of Victoria's premier electrical contractors offering a various array of electrical works to Commercial, Industrial and Residential customers including;**

- PV Solar System Designs & Installations,
- Power Factor Correction installation,
- LED lighting upgrades,
- Office Power and Data Fit Outs,
- Factory Power and Data Fit Outs,
- General Light & Power installations,
- Solar Preventative Maintenance
- Retail Stores reticulation
- Car Park Lighting installations,
- Temporary Light & Power installations,
- Installations of Main Switchboards & DB's,
- Medical & Body Protected Areas
- Underground cabling infrastructure
- Substation works and dealing with supply authorities
- Excavation works
- Street Lighting and Sports Pavilion lighting
- General Light and Power installations
- Coordinating large main and sub-main cable pulls
- Main Switchboard and DB installations



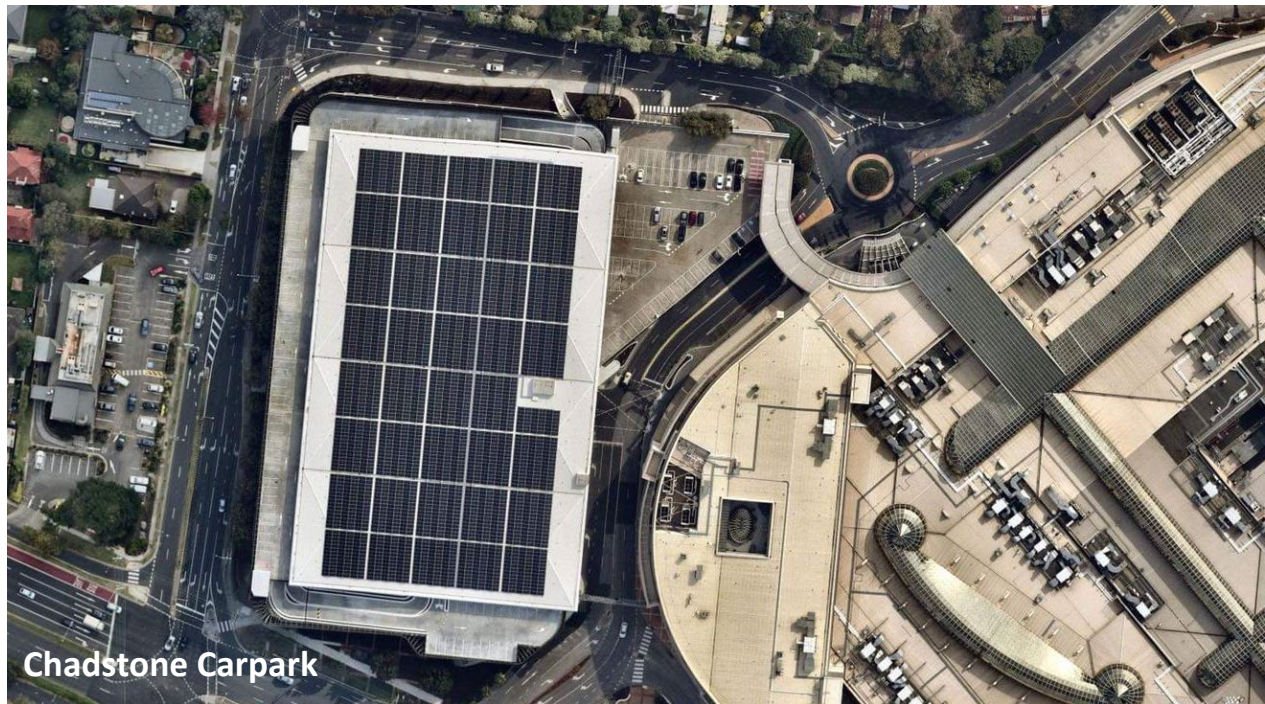
**Woolworths DC Truganina**



# Installation Certifications and Licenses

**Elecfence provides peace of mind when it comes to the installation of solar systems. Our team is certified with the following qualifications;**

- A-Grade Electrician on site at every installation
- SAA accreditation
- Master Electrician Member
- \$20 million public liability insurance
- Elevated Work Platform licensing
- Working at height certification
- White Card
- First Aid certification
- Working With Children Check
- Solar Battery installation available



# Company Resources

## Solar Designers

A team of designers liaise with project managers and installers to produce accurate layouts. Their responsibilities include researching various designs to ensure all configurations meet CEC standards. They utilise computer software to calculate the appropriate number of panels per install to maximise return for the customer with special consideration given to the industry and application of the job.



## Auditors

Elecfence can perform an audit of your current solar system to determine efficiency and safety is at its highest. In the instance where a system does not meet standards, Elecfence can offer to rectify these issues to ensure compliance.



## Project Managers

The Elecfence team of project managers take care of the entire installation. Their process begins with an analysis of roof structures and electrical switchboards within your premises including a review of any relevant architectural plans. Project managers will then liaise with designers and electricians to determine how to achieve the best outcome for your business. The goal of the project manager is to exceed the expectations of the customer and deliver a seamless experience.





# Quality Assurance

Elecforce Australia is committed to comply with the requirements of ISO 9001:2015. We pursue best practice Quality Assurance Principles and meet all statutory requirements.

We aim to deliver a professional, reliable and affordable quality solar & electrical installations. We are committed to meeting customer expectations through implementation of our job process system, which includes comprehensive communication, reporting and follow-up procedures.

Our high-quality service means we can meet customer expectations by mitigating issues before they become a problem, respond quickly and efficiently to each job, understand customer requirements, conduct post job clean up, provide reasonable quotes and give helpful and useful information and advice.



Elecforce Australia ensures that the quality policy is communicated to all employees via staff training procedures. Our highly skilled staff understand the importance of meeting customer requirements and maintaining strong business relationships and providing excellent customer service.

Elecforce Australia conducts management review of the quality management system through management review meetings to ensure its ongoing effectiveness and to identify areas for continual improvement.

The quality management system is reviewed at each management review meeting to determine its continuing suitability for our organization. This policy is established, understood, implemented and maintained at all levels of Elecforce Australia Electrical Services.

The safety of our team and customers is paramount. Elecforce has a zero tolerance of unsafe practices, and ensures all Elecforce sites are at a standard that safeguards our team, our customers and the community.

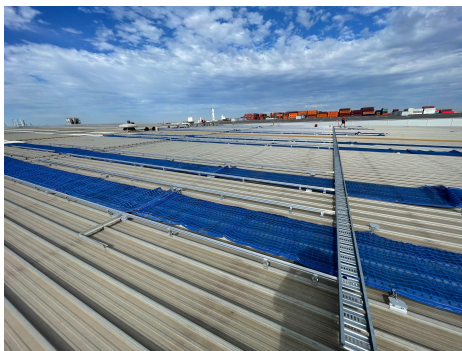
All sites we attend are assessed for hazards & impacts relevant to all work activities. A risk management plan is created and distributed to the on-site team for review. The on-site SWMS and risk management plan is then implemented for all Elecforce Australia team members to adhere to.



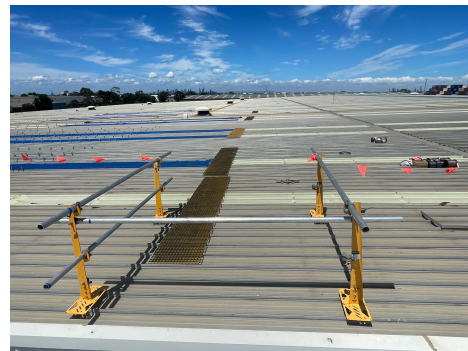
**Edge Protection**



**Mobile Walkway**



**Skylight Mesh**



**EWP Cattle Gate**

**All of our installations comply with and exceed:**

- AS/NZS 3000 Electrical Wiring Rules
- AS/NZS 5033 Installation of photo-voltaic (PV) arrays
- AS 1768 Lightning Protection
- AS/NZS 1170.2 Wind Loads
- AS 4777 Grid Connections of Energy Systems via inverters

Protect your investment with Elecforce Australia's solar maintenance services, designed to keep your solar system performing at its best year after year. Our qualified electricians provide extensive check-ups and routine servicing to ensure your system operates at its highest potential.

Our comprehensive care includes routine testing and fault diagnosis, all carried out with precision and professionalism. Elecforce Australia works to optimise your solar system's performance, helping to prevent downtime and extend the life of your equipment.

## Visual Inspection

We begin with a full assessment of your system, inspecting your solar panels for visible wear, debris and shading. Our team carries out professional solar panel cleaning to remove dust, dirt, and debris that can reduce efficiency.

## Component Checks

All accessible wiring, clamps, conduits and mechanical components are checked for damage or signs of wear. This includes visual checks of inverters, isolators, and mounting frames.

## Functional Testing

We review your inverter readings and check energy production against historical benchmarks to identify any performance issues. This ensures your solar system is still generating power at expected levels.

## Summary & Report

You'll receive a summary of findings, including photos and system data. If we detect faults or risks, we'll provide recommendations if further investigation or repair is needed.





# Brands we have installed for

7

